

## Introduction

**Empowering Parent, Influencing Change (EPIC) Luton Parent Carer Forum (PCF)** is funded by the Department for Education (DfE) for the Luton Borough.

We are a group of parents and carers of children and young people aged 0-25, who have additional needs and/or special educational needs and/or disabilities (SEND). We have formed a committee to re-establish a PCF in this area to give SEND families a collective voice.

## Our Aim

Our aim is to make sure the services in the Luton Borough meet the needs of SEND children and their families. We will do this by working with other parents and carers to understand



the issues they may be facing and the needs of parents and carers in Luton, so when we are engaging with professionals, we are able to communicate parental perceptions, experiences and work together with them to help to address issues identified. In addition, we aspire to provide parents and carers opportunities to benefit from each other's experiences and make informed choices for their children.

## Membership

### Parents/Carers

We at EPIC Luton want parents and carers to join us in making a difference in the Luton Borough to ensure your voices are heard. You can do this in a number of ways which include becoming a Member, Volunteer or a Parent Representative.

Membership is free and helps us stay connected with parents/carers/associates across the Luton Borough. In return we can send you updates and information about EPIC Luton projects.

### Associate Members

EPIC Luton also offers Associate Membership to any individual who is interested in keeping up to date with our work but is not themselves a parent/ carer of a child/young person aged 0-25 with additional needs/SEND in the Luton Borough.

## Parent/carers support and information group

We have a WhatsApp group called EPIC Family Support Group. All registered parents and carers can access it to support one another as well as access up to date information regarding local SEND provisions, coffee sessions.

All parents and carers can be added at the time of registration or opt in later by emailing us at

[contactus@epicluton.org](mailto:contactus@epicluton.org)

**EPIC Family**  
Support Group

## How to register with EPIC Luton

To access our registration form, click on the link below.

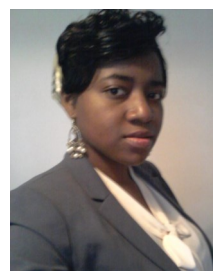
### [EPIC Luton Membership Form](#)

If you experience any difficulty in registering, you can email us at [contactus@epicluton.org](mailto:contactus@epicluton.org) and we will get back as soon as we can.

## Meet the Team

At present we are seven parents/carers with varying skill sets, who are representing the Interests of SEND parents and carers within the Luton Borough. If you want to find out more about us, please checkout Luton's Local Offer SEND Information Hub:

[www.luton.gov.uk/localoffer](http://www.luton.gov.uk/localoffer)



## Where you can find us

You can follow us on

**Facebook** <https://www.facebook.com/epiclutonpcf>

**Twitter** <https://twitter.com/epiclutonpcf>

**Instagram** <https://www.instagram.com/epiclutonpcf>

**Linked in** <https://www.linkedin.com/company/epiclutonpcf>

Our username is [@epiclutonpcf](#)

**Visit our website:** <http://www.epiclutonpcf.org>

## Contact us

For further information or general enquiries please email us at [contactus@epicluton.org](mailto:contactus@epicluton.org) and we will get back to you.

## Some of our highlights so far

### Luton's Local Offer

Collaborating with local government agencies to keep Luton's Local Offer, fit for purpose, including its recent name change to Luton's Local Offer SEND information hub. This is an online hub which can be used to find information about local services, support and events for children and young people aged 0-25, who have additional needs and/or SEND within the Luton Borough.

### Wellbeing Workshop

We have successfully hosted a workshop for parents and carers giving them the opportunity to share their experiences, learn new strategies and explore new ways to reduce stress.

### Big Iftar

We took part in the Big Iftar event organised by Inspire FM, which gave us the opportunity to meet many parents and carers in Luton and hear the amazing stories of these everyday heroes!



### Luton Libraries new multi-sensory area for children with additional needs

We took a sneak peek at the recently installed sensory equipment and resources at Luton Central Library, which inspired us EPIC committee members to revisit accompanied by a panel of 'experts' - our children! We all had a great time particularly exploring the den, playing with the sensory wall, making works of art and of course also read a book or two. Staff were friendly and accommodating towards our children's needs adding to their experience.



## Upcoming Events

We will be finishing off the summer term with a 'Meet and Greet' session on 18th July 2022, at 10am hosted by Windmill High School. This session is open to all parents and carers with a child with additional needs/ SEND aged 0-25 in the Luton Borough.

Come along for a cuppa and find out more about what we do.



## What's next for EPIC Luton

We have launched our website, which we anticipate Will be a key platform to keep you informed of our work. So come have a look and let us know what you think!

In the Autumn term we will start exploring setting up regular coffee information sessions. We are hoping to make these sessions relevant to the needs of Luton's SEND families, which is why we need to hear from you. You can write to us at [contactus@epicluton.org](mailto:contactus@epicluton.org) regarding which SEND topics you would like to see us cover. Alternatively let us know through EPIC Family Support Group.

## Tell us what you think

We welcome your feedback, issues and concerns about the service being received by parents and carers of children and young people aged 0-25, who have additional needs and/or SEND.

We want to hear your experiences regarding navigating through the Luton SEND services, what went well, what could have been done differently to improve the experience for you and any suggestions you would like to make to improve local services.